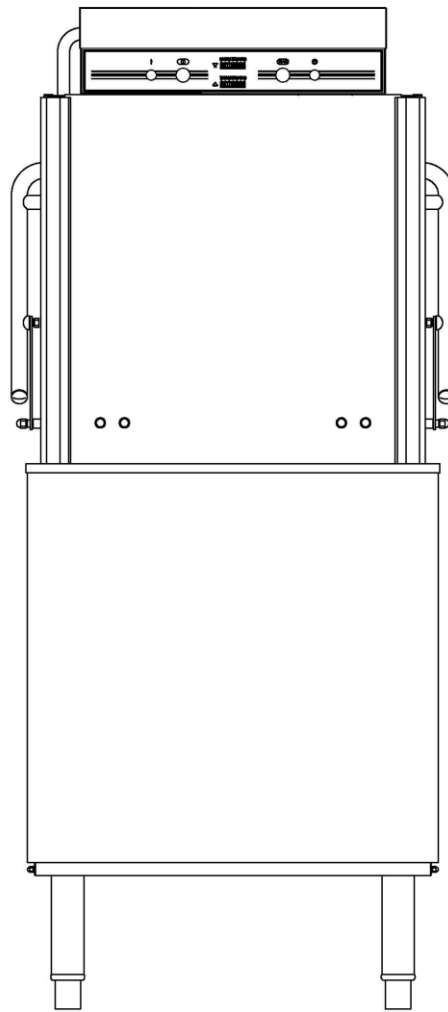


台灣美國版掀們機

Door Type Dish Washer

SPARE PARTS MANUAL



適用於 VT-3A

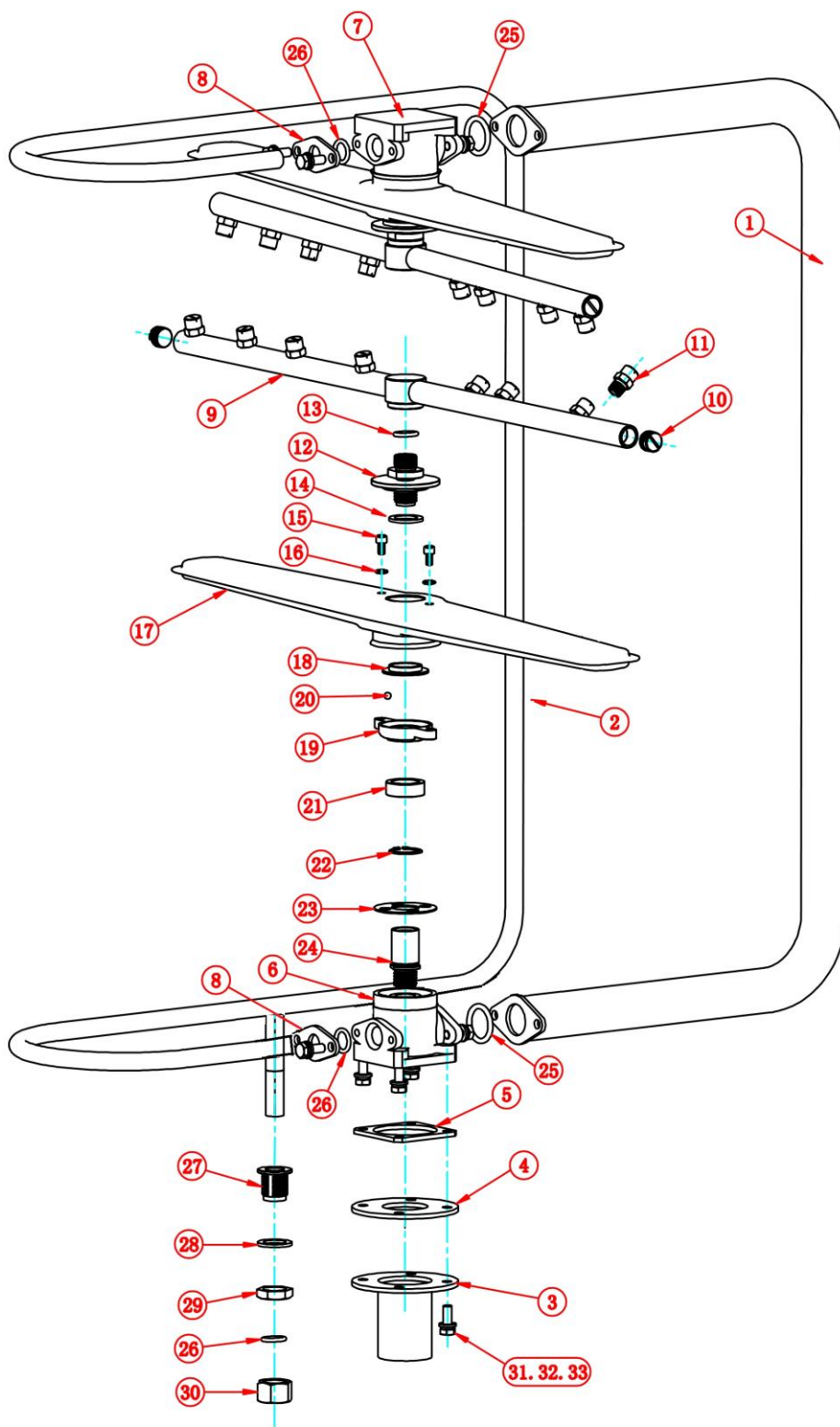
2022. 11

CONTENT

Wash And Rinse Arm.....	2
Booster Heater.....	4
Piping on the Roof	6
Wash Chamber	8
Door Lift	10
Lower Frame Assembly.....	12
Wash Tank	14
Door Panel Assembly	17
Control Panel	19

Chapter (1)

噴管組件 Wash And Rinse Arm



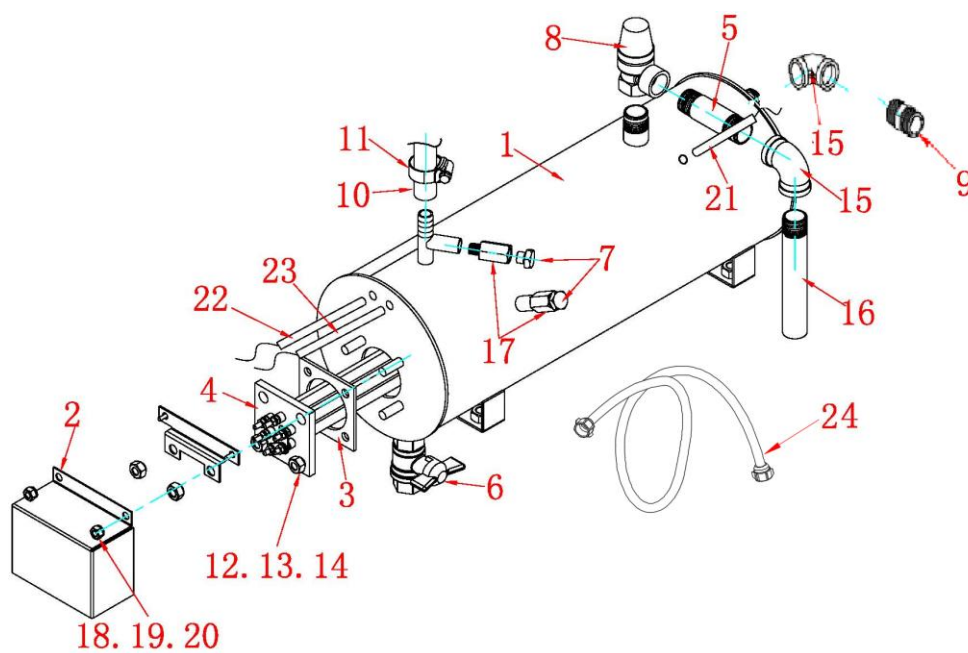
Chapter(1)Wash And Rinse Arm

<u>Item No</u>	<u>Parts No.</u>	<u>Name</u>	<u>Part Name</u>	<u>Quantity</u>
1	0JD-503019(+50)	清洗管	Wash Piping Assy	1
2	0JD-50302(+50)	管啟	Rinse Piping Assy	1
3	0JD-50306	接頭	Adapter	1
4	F001-50319-01	密封墊-TD-50319	Gasket	1
5	F001-50308B-01	密封墊-TD-50308B	Gasket	1
6	A012-50305/1A-01	麻子-下	Lower Manifold	1
7	A012-50305/2A-01	麻子-上	Upper Manifold	1
8	0JD-50302-3A	噴淋管介面法蘭	Flange	2
(9-14)	0PJ-JD-PLB	過水套件	Rinse	1
9	0JD-50311	過水臂	Rinse Arm	2
10	A012-50311/5A-01	不銹鋼閉頭	End Cap	4
11	A012-50311/6-03	噴嘴	Nozzle	16
11-1	A012-50311/6-05	廣角噴嘴	Wide-angle spray	2
12	0JD-50311-7	鎖緊螺母組合件	Lock Washer	2
13	F002-20x1.8-01	O型圈-20*1.8	O Ring	2
14	F001-50320-01	密封墊 24*16*1	Gasket	2
(15-20)	0PJ-JD-PB	噴臂套件	Wash	1
15	E010-M5x10-01	內六角螺絲-M5*10	Blot M5x10	4
16	E012-M5-01	外錐齒鎖緊螺母	Lock Nut	4
17	0JD-50310	清洗臂	Wash Arm	2
18	A012-50310/2-01	軸承擋圈	Bearing Retainer	2
19	A012-50310-01	軸承體-JD-50310	Bearing Body	2
20	A007-D5-01	不銹鋼球-直徑 5	Ball Bearing	34
21	F017-50309-01	墊圈-TD-50309	Washer	1
22	E019-M18-01	卡簧-M18	Spring Washer	1
23	0JD-50307	節流片	Flow Restrictor	1
24	A012-50304/2-01	螺紋套-JD-50304/2	Thread Bushing	2
25	F002-21.2x3.55-01	O型圈-21.2*3.55	O Ring	2
26	F002-12.5x2.65-01	O型圈-12.5*2.65	O Ring	3
27	A012-50312-01	過渡螺紋套	Lasso	1
28	F017-2xD18xD25-01	聚氟乙烯墊圈	Gasket	1
29	A012-50313-01	薄螺母-JD-50313	Thin Nut	1
30	A012-50314-01	管接頭螺母	Coupling	1

31	E010-M6x20-01	內六角螺絲-M6*20	Blot M6x20	12
32	E011-M6-01	彈墊-M6	Spring Washer	12
33	E012-M6-01	平墊-M6	Flat Washer	12

Chapter (2)

升溫器組件 Booster Heater



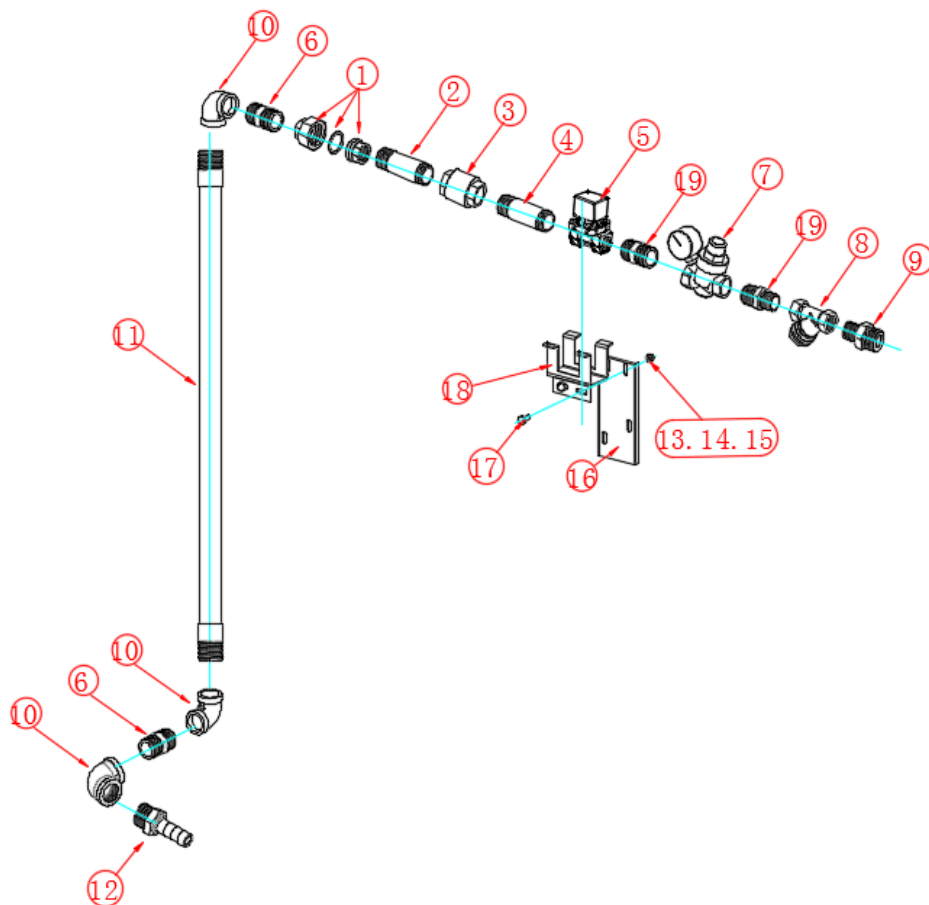
Chapter (2)

升溫器組件 Booster Heater

<u>Item No</u>	<u>Parts No.</u>	<u>Name</u>	<u>Part Name</u>	<u>Quantit</u>
1	OJD-40A-301A	加熱包	Booster Cylinder Tank w/insulation	1
2	OJD-40A-301-8A	防護罩	Shield	1
3	F001-40309-01	密封墊	Gasket	2
4	G005-9KW-05	9KW-208V 加熱管	9 kW Heater	1
5	D004-1/2X85-01	不銹鋼雙頭絲	1/2 " S.S. Joint	1
6	D018-1/2 -01	1/2 銅碟閥	1/2" Drain Valve	1
7	A012-40306-01	閃箔	Hole Plug	2
8	D023-3bar-01	安全閥	Pressure Relief	1
9	D010-1/2X3/4-02	變徑外絲-1/2x3/4	Reducing outer filament	1
10	F021-50310/3A-01	噴淋至中口補接管	Rubber Hose	2
11	E018-11x25-01	夾箍	Hose Clamp	2
12	E013- M8-01	外六角螺母	Hexagonal Nut	4
13	E011-M8-01	彈簧墊圈	Spring Washer	4
14	E012-M8-01	平墊圈	Flat Washer	4
15	D009-1/2-01	1/2 內絲彎頭	1/2" S.S. Elbow	2
16	D005-1/2x150-01	1/2 單頭絲	1/2 " S.S. Joint	1
17	A012-40307A-01	過渡接頭	Transition joints	2
18	E013-M6-01	外六角螺母	Hexagonal Nut	2
19	E011-M6-01	彈簧墊圈	Spring Washer	2
20	E012-M6-01	平墊圈	Flat Washer	2
21	G021-100C-01	恆溫制-100 度	Booster Thermostat	1
22	G065-WZJ1020-02	顯示板探針(紅)	Show Board Probe	1
23	G021-110C-01	恆溫制-110 度-自動	Booster Thermostat	1
24	D024-3/4X850-01	不銹鋼進水管(一頭	Stainless steel water inlet pipe	1

Chapter (3)

機頂管路 Piping on the Roof



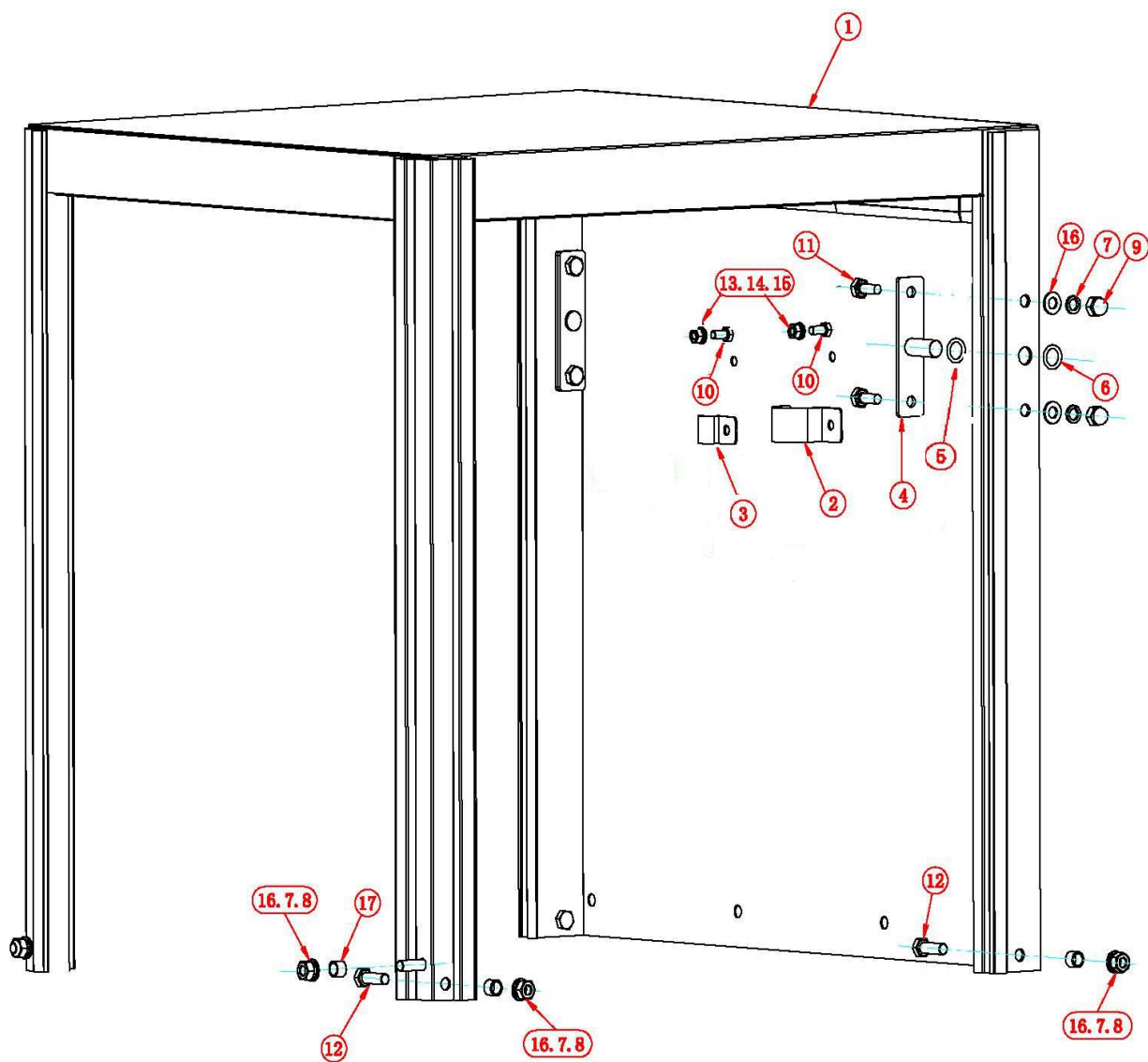
Chapter (3)

機頂管路 Piping on the Roof

<u>Item No</u>	<u>Parts No.</u>	<u>Name</u>	<u>Part Name</u>	<u>Quantit</u>
1-1	D014-1/2-01	1/2 活節-公	1/2 Coupling Joint	1
1-2	D014-1/2-02	1/2 活節-母	1/2 Coupling Joint	1
1-3	D014-1/2-03	1/2 活節-螺絲	1/2 Coupling Joint	1
1-4	D014-1/2-04	1/2 活節-墊圈	1/2 Coupling Joint	1
2	D004-1/2x70-01	不銹鋼雙頭絲	Stainless steel double head wire	1
3	D020-1/2-01	單向閥 1/2"	One-way valve	1
4	D004-1/2x85-01	不銹鋼雙頭絲	Stainless steel double head wire	1
5	G017-ADK11-15A-B2 E-AC220V*1/2-01	電磁閥 CKD AC220V*1/2	Solenoid valve	1
6	D004-1/2-01	不銹鋼雙頭絲六角	Stainless steel double head wire	2
7	D017-3/4-01	組合式減壓閥 -D06E-A/DN20-3/4	Combined pressure reducing valve	1
7-1	D015-1/4-02	1/4 壓力錶	Pressure Gauge	1
8	D016-1/2-01	絲口篩檢程式-1/2	Wire mouth filter	1
9	A012-60311-01	總絲接頭	Reducer Union	1
10	D009-1/2-01	內絲總頭	Inner wire elbow	3
11	OJD-60312A	進水管	water inlet pipe	1
12	D004-1/2X14-01	外絲寶塔接頭	Outer silk pagoda connector	1
13	E013-M6-01	外六角螺母	Hexagonal Nut	4
14	E011-M6-01	彈簧墊圈	Spring Washer	4
15	E012-M6-01	平墊圈	Flat Washer	4
16	OJD-40A-307A	支架	bracket	1
17	E009-M6x12-01	外六角螺絲	Hex Screw	2
18	OJD-40A-304	電磁閥支架	Solenoid valve bracket	1
19	D010-1/2x3/4-02	變徑外絲-1/2*3/4	Reducing outer filament	2

Chapter(4)

上罩組件 Wash chamber



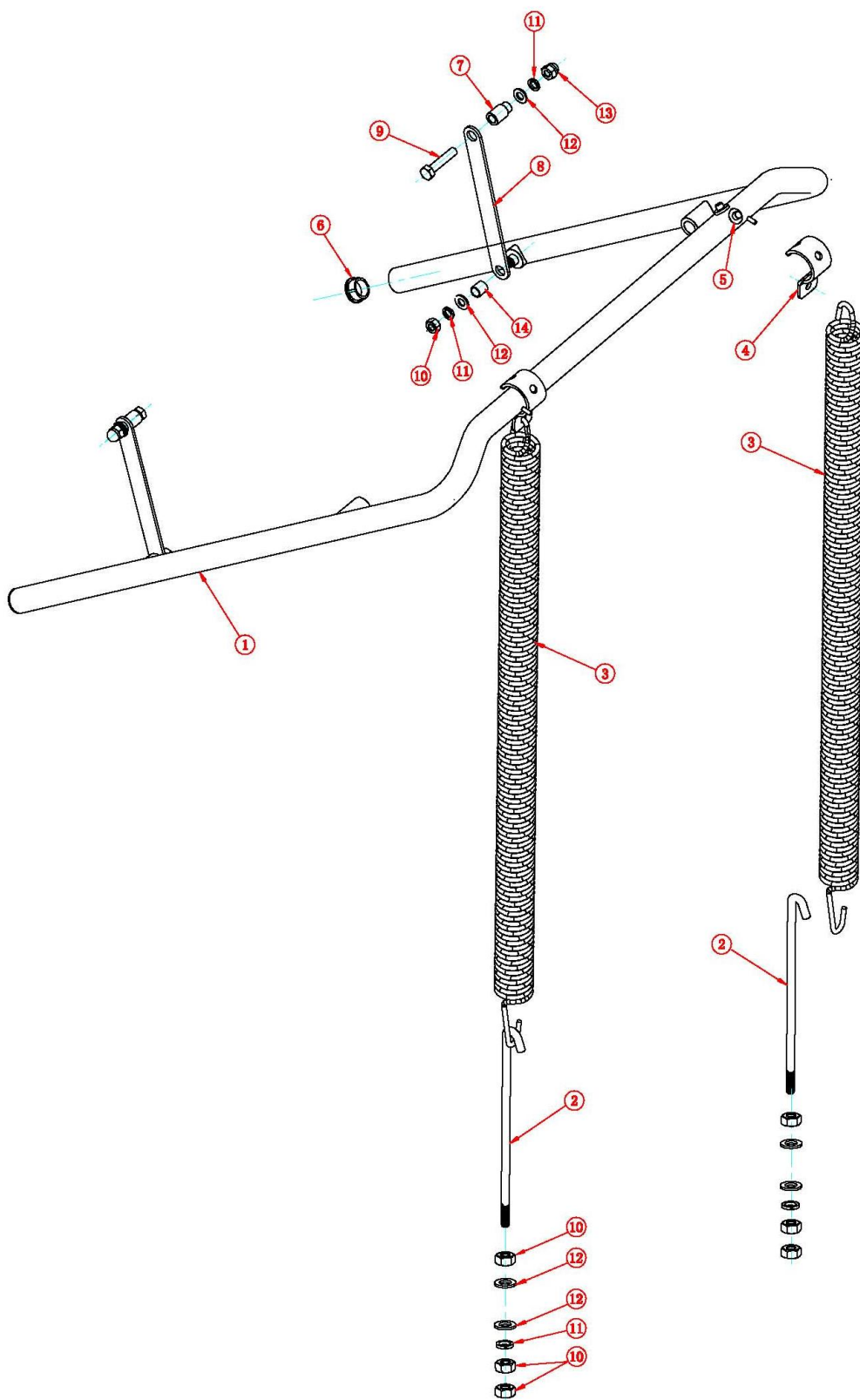
Chapter(4)

上罩組件 Wash chamber

<u>Item No</u>	<u>Parts No.</u>	<u>Name</u>	<u>Part Name</u>	<u>Quantity</u>
1	0JD-20000D	上罩	Upper Hood	1
2	0JD-65317	夾箍	Clamp	1
3	0JD-65318	夾箍	Clamp	1
4	0JD-25307	手柄軸	Handle Pivot	2
5	F002-10X2*65-01	O 形圈	O-ring	2
6	E012-M12-01	平墊圈 M12	Washer	2
7	E011-M8-01	彈墊-M8	Lock Washer M8	8
8	E013-M8-01	外六角螺母-M8	Bolt M8	6
9	E014-M8-01	六角蓋形螺母	Hex Domed Cap Nut M8	4
10	E009-M6x16-01	外六角螺絲	Bolt M6x16	2
11	E009-M8x20-01	外六角螺絲	Bolt M8x20	4
12	E009-M8x25-01	外六角螺絲	Bolt M8x25	6
14	E011-M6-01	彈墊-M6	Lock Washer M6	2
15	E012-M6-01	平墊-M6	Flat Washer M6	2
16	E012-M8-01	平墊-M8	Flat Washer M8	10
17	A012-65313A-01	襯圈	Bushing	6

Chapter (5)

門把手組件 Door Lift



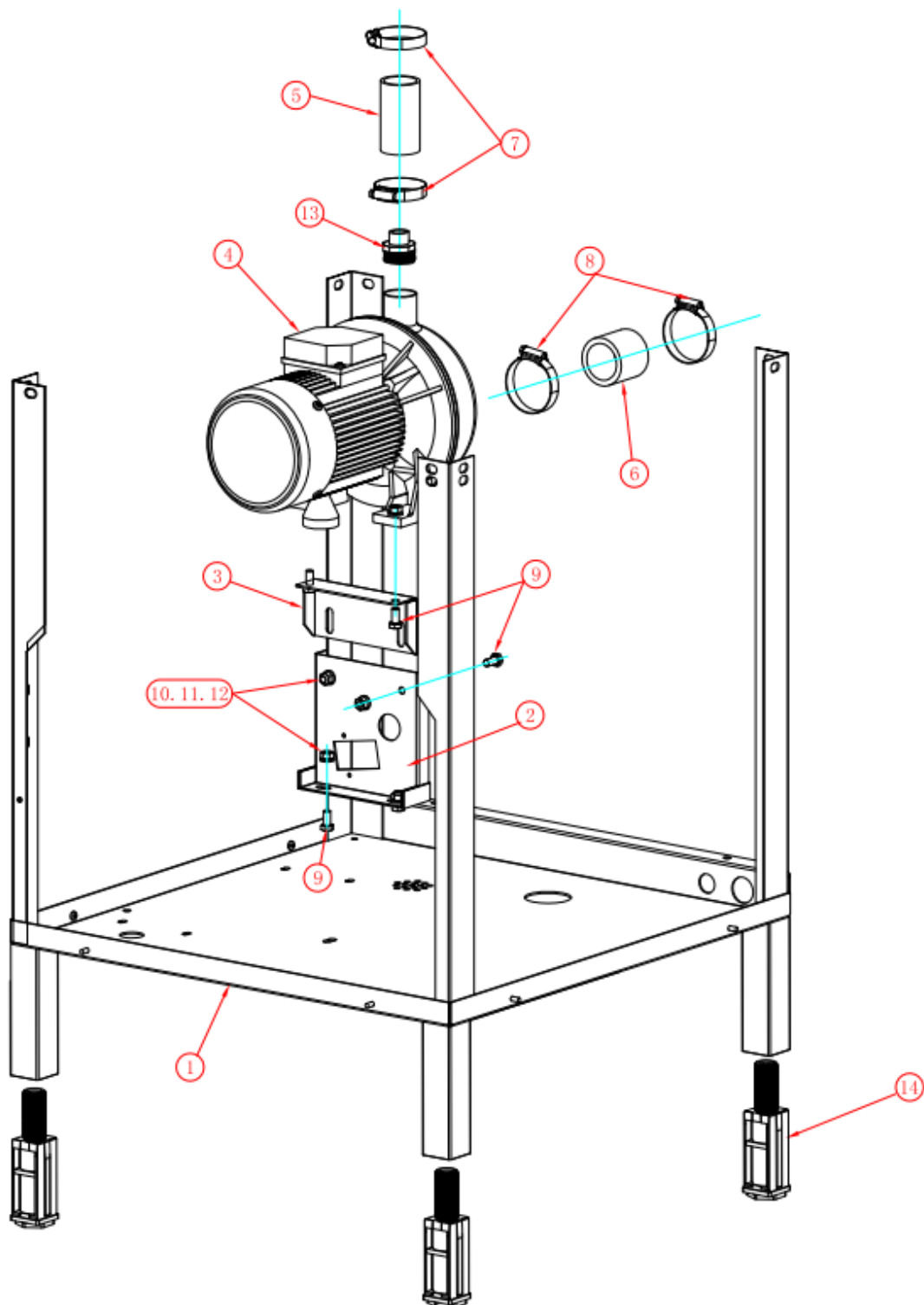
Chapter (5)

門把手組件 Door Lift

<u>Item No</u>	<u>Parts No.</u>	<u>Name</u>	<u>Part Name</u>	<u>Quantity</u>
1	0JD-25301(+50)	把手	Handle	1
2	0JD-25303	彈簧鉤	Spring hook	2
3	A002-25309-01	拉簧-JD-25309	Door Spring	2
4	0JD-25302	彈簧卜鉤	Hanger-Spring	2
5	F025-25308-01	尼龍支承-JD-25308	Button-Bearing	4
6	F005-D25-01	標準的圓形管塞-單	Pipe plug	2
7	A012-65408-01	套-JD-65408	Pin-Door Lift	2
8	0JD-25304B	吊環 (T=210)	Link Door	2
9	E009-M8x40-01	螺栓 M8x40	Bolt M8x40	2
10	E013-M8-01	螺母 M8	Nut M8	2
11	E011-M8-01	彈簧墊圈 M8	Lock Washer M8	4
12	E012-M8-01	平墊圈 M8	Flat Washer M8	4
13	E014-M8-01	蓋形螺母 M8	Cap Nut M8	2
14	E009-M6X25	外六角螺絲	Bolt M6x25	2
15	E011-M6-01	彈墊 M6	Lock Washer M6	2
16	E012-M6-01	平墊 M6	Flat Washer M6	2
17	A012-25305-01	套-JD-25305	Bushing	2

Chapter (6)

下座組件 (Model B) Lower Frame Assembly



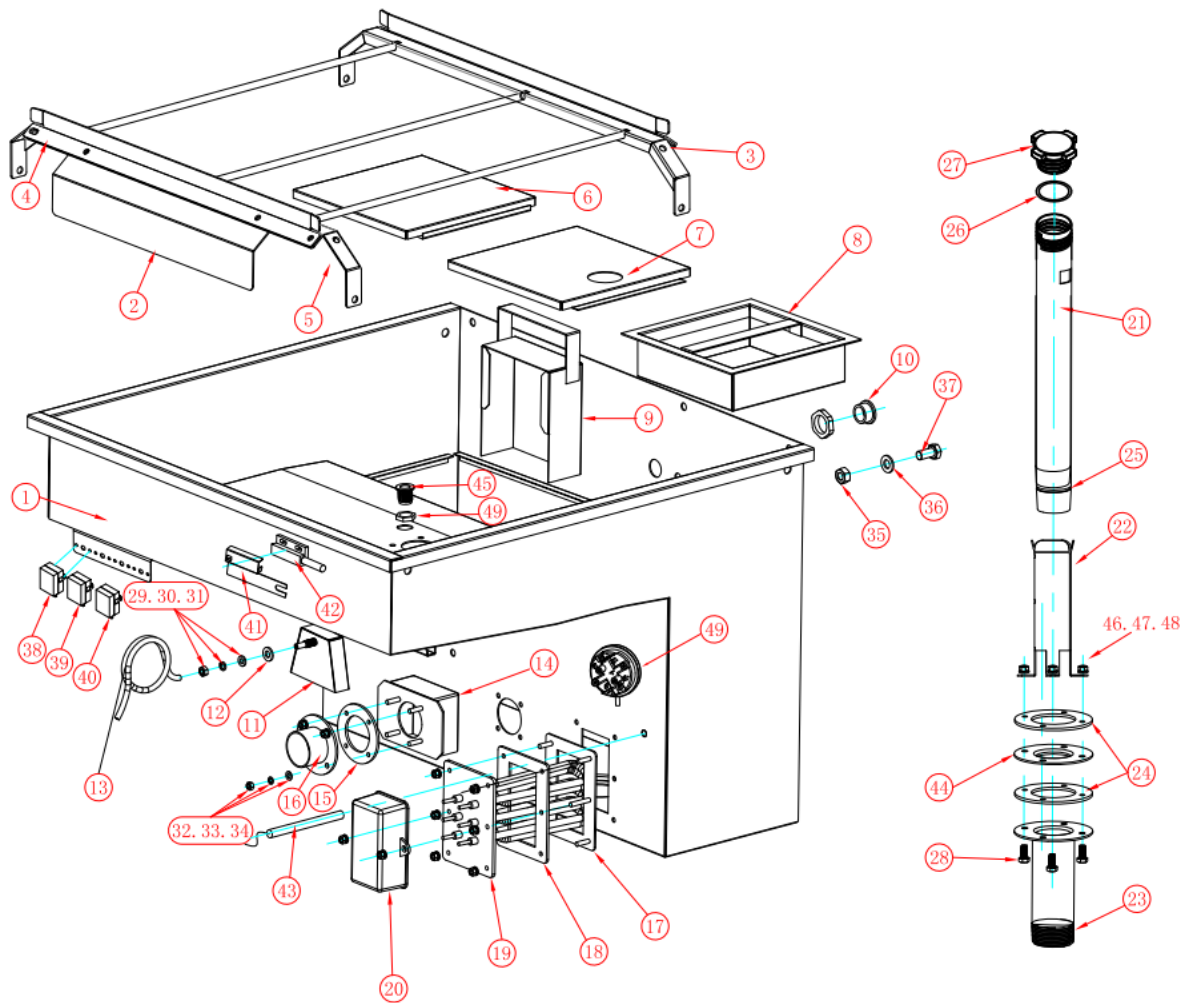
Chapter (6)

下座組件 (Model B) Lower Frame Assembly

<u>Item</u>	<u>Parts No.</u>	<u>Name</u>	<u>Part Name</u>	<u>Quantity</u>
1	0TD-10305R (+50)	底座	Base	1
2	0JD-60301	下架	Lower Wash Pump Stand	1
3	0JD-60302	清洗泵上架	Upper Wash Pump Stand	1
4	G003-120/090-02	清洗水泵	1.2 H/P Wash Pump/Motor	1
5	F021-D38-01	食品管-直徑 38*80	Wash Pump Hose (Outlet)	1
6	F021-D51-01	食品管-直徑 51*60	Wash Pump Hose (Inlet)	1
7	E018-18x38-01	夾箍	Hose Clamp S. S.	1
8	E018-44x70-01	夾箍	Hose Clamp S. S.	1
9	E010-M8X20-01	內六角螺絲	Hexagonal Bolt	6
10	E013- M8-01	外六角螺母	Hexagonal Nut	6
11	E011-M8-01	彈簧墊圈	Spring Washer	6
12	E012- M8-01	平墊圈	Flat Washer	6
13	0JD-60313	泵出口接頭	Hose Adapter	1
14	A003-10307B-01	調節腳-0D-10307R	Extended Leg	4

Chapter (7)

主洗槽組件 Wash Tank



Chapter (7)

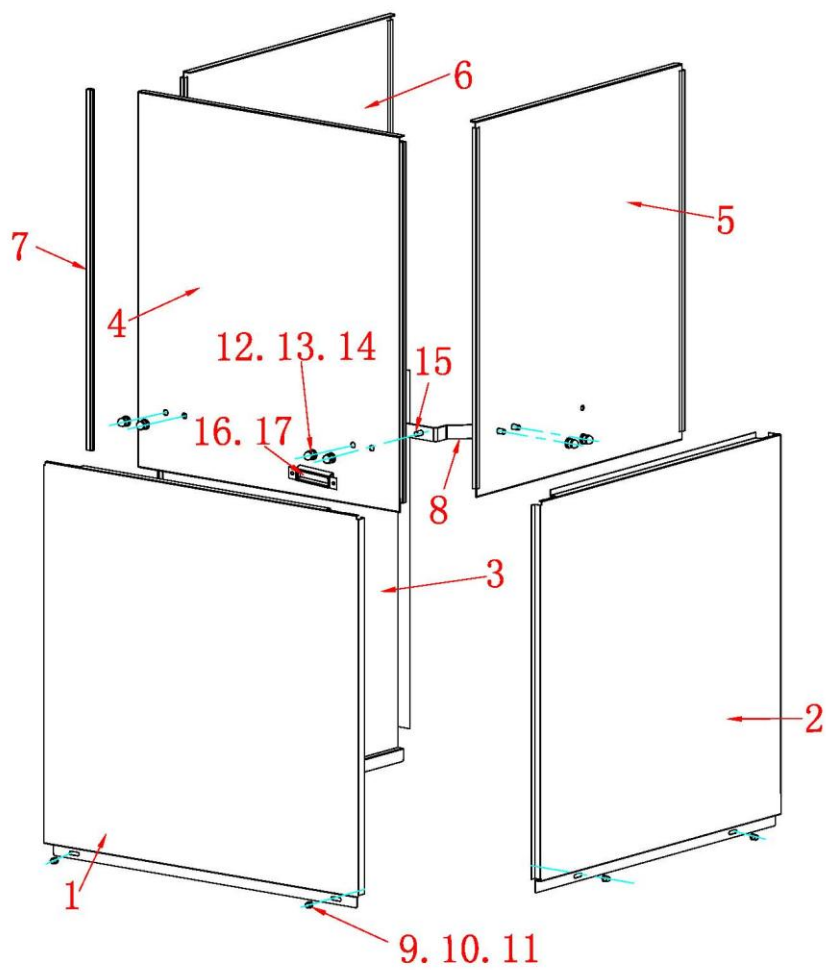
主洗槽組件 Wash Tank

<u>Item No</u>	<u>Parts No.</u>	<u>Name</u>	<u>Part Name</u>	<u>Quantit</u>
1	0TD-10301 (+50)	水箱	Wash Pan	1
2	0TD-30303-1 (+50)	擋水板	Splash Protection	1
3	0JD-30301A-01	藍框架左支撐	Left support of blue frame	1
4	0JD-30301A-03	右上支架	Right upper bracket	1
5	0JD-30301A-02	藍框架右支撐	Blue frame right support	1
6	0TD-65303 (+50)	網罩	Mesh cover Hole	1
7	0JD-65302	網罩	Mesh cover	1
8	0TD-65301 (+50)	垃圾籃	Trash basket	1
9	0JD-65304	插網	Plug in the net	1
10	F005-M22-01	塑膠悶蓋-M22	Hole Plug	1
11	0JD-65309	氣室	Air Chamber	1
12	F017-2xD8xD16-01	氣室墊圈	Gasket	1
13	F022-D8x4-01	矽膠管	Silicon Tube	1
14	0JD-60306A	網罩插座	Pump Intake	1
15	F001-60307A-01	密封墊	Gasket	1
16	0JD-60305A	法蘭套	Wash Pump Inlet	1
17	0JD-65332	法蘭	Wash Tank Heater	1
18	F001-40304-01	密封墊	Wash Tank Heater	1
19	G005-5kW-02	208V 5KW 加熱管	5kW Heating Element	1
20	F016-40305-01	防護罩	Protection Cover	1
21	0JD-65305A	排水管上體	S. S. Drain Pipe	1
22	0JD-65350	導向套	Guide sleeve	1
23	F011-65306A	排水管下體	Plastic Drain	1
24	F001-65307A	密封圈	Gasket	2
25	F002-32.5X2.65-01	O 型圈-32.5*2.65	Type O circle	1
26	F002-34*5X5*3-01	O 型圈-34.5*5.3	Type O circle	1
27	F007-50339-01	螺紋蓋	Threaded cap	1
28	E009-M6x25-01	螺栓 M6 x25	Hex bolt M6 x25	4
29	E012-M8-01	平墊-M8	Flat Washer M8	1
30	E011-M8-01	鎖墊-M8	Lock Washer M8	1
31	E013-M8-01	外六角螺母-M8	Nut M8	1

32	E011-M6-01	彈墊-M6	Lock Washer M6	4
33	E012-M6-01	平墊-M6	Flat Washer M6	4
34	E013-M6-01	銅螺母-M6	Cu Nut M6	4
35	E015-M8-01	鎖緊螺母-M8	Nut M8	4
36	E012-M8-01	平墊-M8	Flat Washer M8	4
37	E009-M8X16-01	外六角螺栓	Outer hexagon bolt	4
38	G021-82C-01	恒溫制-82 度-自動	Thermostat 82°C	1
39	G021-100C-01	恒溫制-100 度-自動	Thermostat 100°C	1
40	G021-110C-01	恒溫制-110 度-自動	Thermostat 110°C	1
41	OJD-65340D	磁鐵罩殼	Magnet housing	1
42	OJD-65998A	磁控開關短線	Magnetic switch	1
43	G013-WDTZ-01	線路板溫探 (118inch)	Circuit board temperature probe	2
44	OJD-65306A-1	菱水口補接板	Downspouts	1
45	A012-50312-01	漏渣螺絲套	Screw-Sealed	1
46	E013-M6-01	外六角螺母	Hexagonal Nut	4
47	E011-M6-01	彈簧墊圈	Spring Washer	4
48	E012-M6-01	平墊圈	Flat Washer	4
49	A012-50313-01	薄螺母-1D-50313	Nut	1

Chapter (8)

門元件 Door Panel Assembly



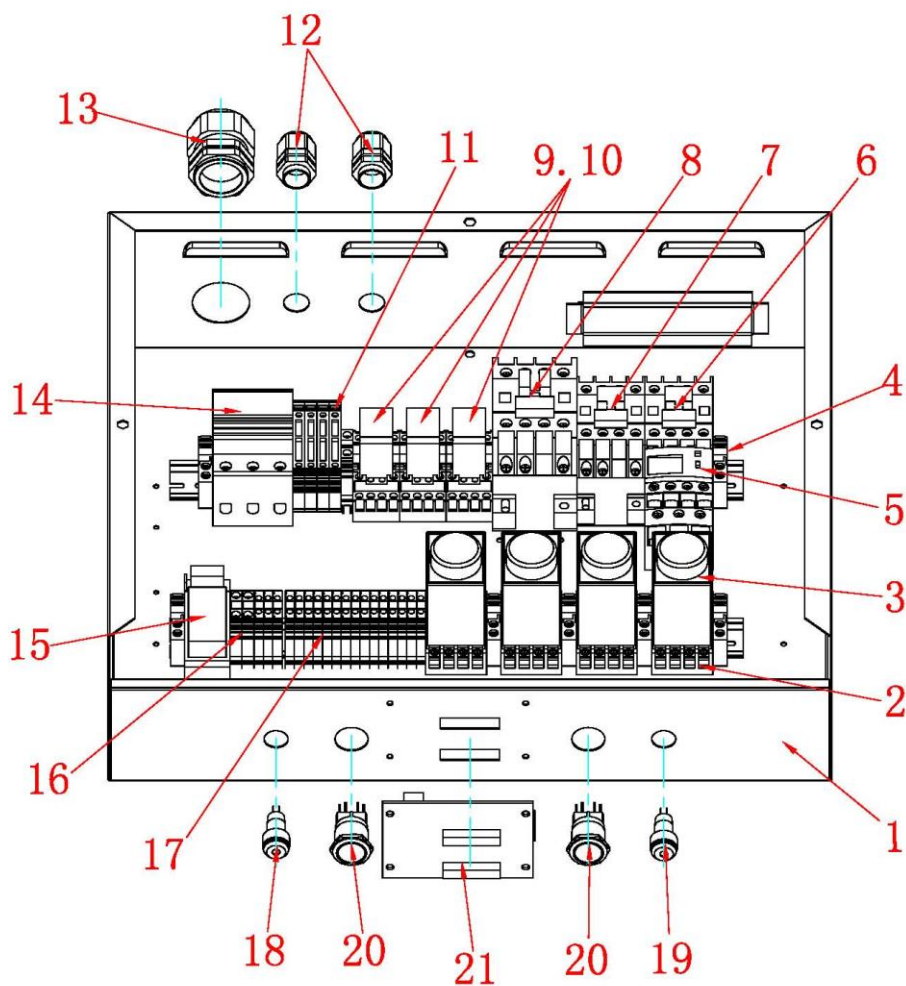
Chapter (8)

門元件 Door Panel Assembly

<u>Item No.</u>	<u>Parts No.</u>	<u>Name</u>	<u>Part Name</u>	<u>Quantity</u>
1	0TD-65320R (+50)	前面板	Front Panel	1
2	0JD-65321	側面板	Side Panel (R)	1
3	0JD-65322	側面板	Side Panel (L)	1
4	0TD-65323 (+50)	前門板	Front Door	1
5	0JD-65324	側門板	Side Door (R)	1
6	0JD-65325	側門板	Side Door (L)	1
7	F003-65326-01	帶條	Door Strap	6
8	0JD-65316	連接角口	Door Connecting Strap	2
9	E014-M5-01	六角螺母	Hex Domed Cap Nut	6
10	E011-M5-01	彈簧墊圈	Spring Washer	6
11	E012-M5-01	平墊圈	Flat Washer	6
12	E014-M8-01	六角螺母	Hex Domed Cap Nut	8
13	E011-M8-01	彈簧墊圈	Spring Washer	8
14	E012-M8-01	平墊圈	Flat Washer	8
15	E010-M8x20-01	內六角螺栓	Hexagonal Bolt	8
16	0T2D-65318-8	磁鐵殼	magnet box	1
17	A005-10x17x51-01	磁鐵	magnet	1

Chapter (9)

電路板控制元件 Control Panel



Chapter (9)

電路板控制元件 Control Panel

<u>Item No</u>	<u>Parts No.</u>	<u>Name</u>	<u>Part Name</u>	<u>Quantit</u>
1-1	0JD-70C-301	雷哭合底	Control Panel Base	1
1-2	0JD-70C-302	雷哭合基	Control Panel	1
2	G028-P2CF/08-01	時間繼雷哭麻子	Relay Seat	4
3	G011-AC220-01	時間繼雷哭	Time Control Relay	4
4	G042-2G2-01	固定插	Track Holder	10
5	G010-D08C-01	執超載繼雷哭	Wash Pump	1
6	G008-D09M7-01	交流接觸器	AC Contactor	1
7	G008-D18M7-01	交流接觸器	AC Contactor	1
8	G008-D32M7-01	交流接觸器	AC Contactor	1
9	G012-AC200/220-01	中間繼雷器	Relay	3
10	G028-PTF14A/E-01	中間繼雷器麻子	Relay Seat	3
11	G041-4RD-01	保險絲接線端子	Fuse Holder	4
12	G029-PG9-01	固定頭	Fixed Head	2
13	G029-PG29/2-01	固定頭	Fixed Head	1
14	G009-D63A-02	斷路器	Circuit Breaker	1
15	G024-220V/5V-03	電源集成塊	Transformer	1
16	G041-6-01	接線端子	Wiring Terminal	2
17	G041-4-01	接線端子	Wiring Terminal	20
18	G035-E/5V-01	黃不銹鋼指示燈	Yellow light	1
19	G035-E/5V-02	綠不銹鋼指示燈	Green light	1
20	G036-11Z-01	自鎖按鈕	Switch	2
21	G014-1020-01	溫度顯示板	Temperature display	1